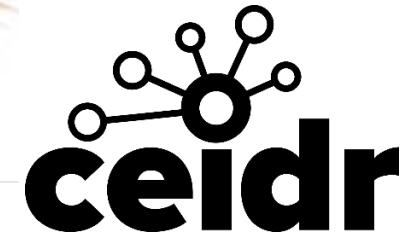


## THE STOP COVID WEBINAR, 29 May 2020

[liverpoolhealthpartners.org.uk](http://liverpoolhealthpartners.org.uk)



- The STOP COVID Webinar took place on 29 May
- Thank you to colleagues who were able to join us
- We are sorry that there was an interruption to the webinar
- We share the slides in lieu of a full recording
- We look forward to seeing you at our next webinar





# STOP COVID: Strategic One Liverpool Partnership for COVID Webinar

A Liverpool system wide approach to  
research during the COVID pandemic

May 29th 2020

Introduction: The COVID challenge, William Hope

Liverpool's Response

- STOP COVID, Stacy Todd
- Developing new research, Rachel Joynes
- Delivering national research, Chris Smith

Spotlight on:

Innovations

- COVID COVER, Elizabeth Collins/ Carrie Hunt

Example of Liverpool Lead Studies

- COVID-19 and dementia, Clarissa Giebel
- COVID LIV, Dan Hungerford/ Neil French

Restarting research and next steps, William Hope

Q&A

## The COVID challenge

### National

- Significant challenge of emerging pandemic
- Research is a strategically vital component
- Nationwide COVID research has been prioritised by the Chief Medical Officer (CMO) with national NIHR organisations and local infrastructure redirected into COVID research

### Liverpool

- The Universities of Liverpool, Liverpool School of Tropical Medicine and Alder Hey Children's Charity have invested £1.1M+ into COVID research in Liverpool
- Other LHP Partners are also pivoting to COVID research
- Liverpool NHS Trusts are actively delivering COVID research from the national and local portfolio
- Existing NWC CRN led study triage, set up systems and initiation via SPARK, monitoring and delivery are already in place
- We urgently needed
  - to strategically align Liverpool population & research opportunities
  - a systems wide approach to the full pipeline

## Liverpool's Response (STOP COVID)

## Aims

1. Develop new diagnostics, drugs and treatments for COVID-19
2. Better understand the impact of social inequality on viral transmission, disease and recovery
3. Understand risks for development of severe clinical disease and protective immunity
4. Understand and address the impact of the COVID pandemic on our residents, health and social care services and other economic issues

## Research studies

- Effectively prioritise studies to deliver in LCR aligned to collective strategic priorities
- Create a balanced portfolio to include national (Urgent Public Health classified and potentially others) and local strategically important research studies to deliver maximum system benefit.
- Set up and deliver studies quickly and efficiently

## Workforce and infrastructure

- Prioritise & mobilise the workforce with appropriate skills and expertise and infrastructure
- Integrate the coordination of research delivery across the City drawing CRN and Trust funded research delivery staff into one research delivery workforce for Liverpool

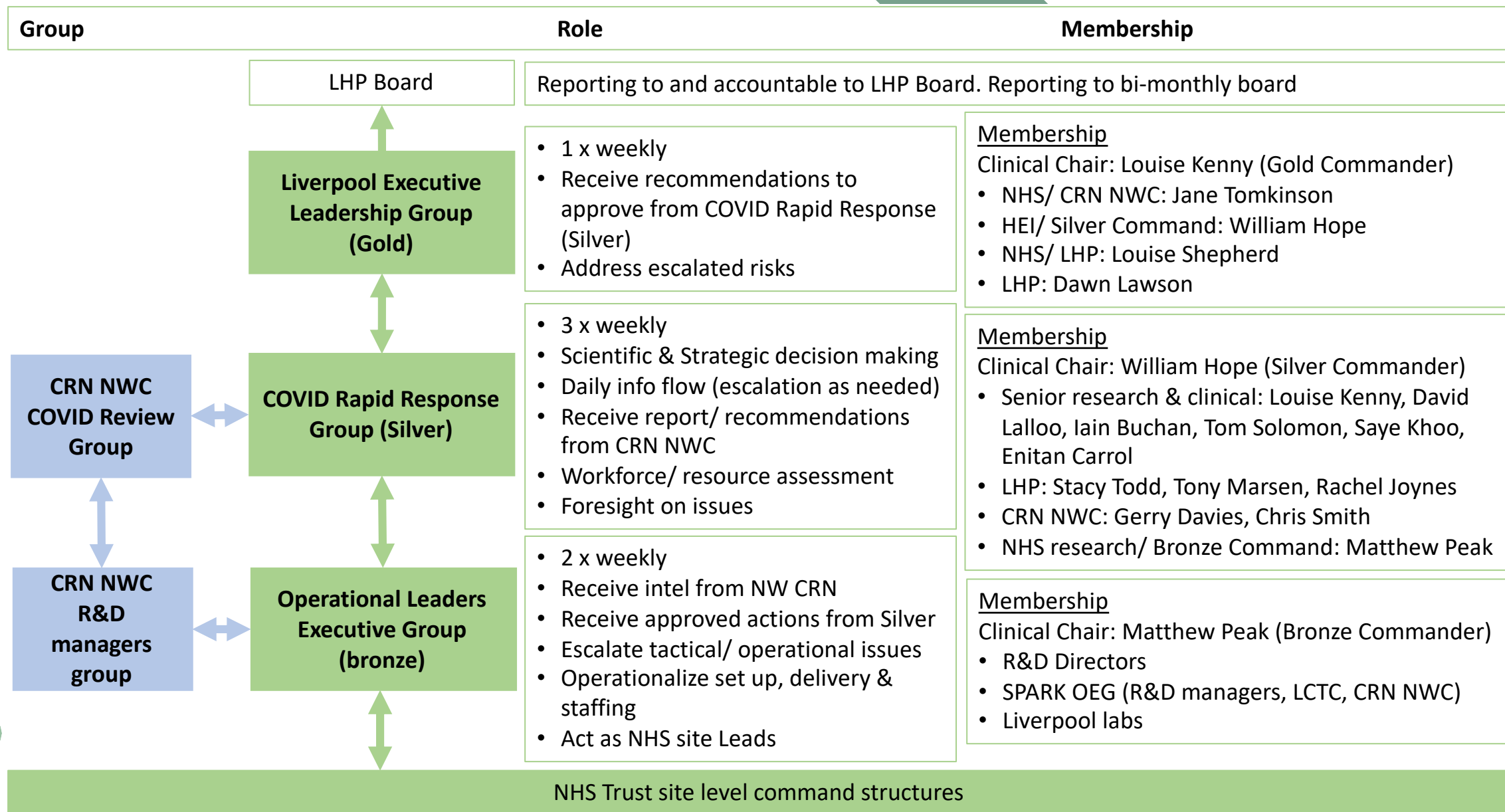
## Other activity

- Enhanced support for trusts with capacity reporting and planning
- Clear and streamlined COVID specific operational work programmes (e.g. new processes to enable research)
- Coordinated foresight and resolution of strategic and operational challenges



# STOP COVID Rapid Response Structures

[liverpoolhealthpartners.org.uk](http://liverpoolhealthpartners.org.uk)



**Developing new research**

- Continue support as usual for researchers (via LHP programmes and other routes).
- Ensure appropriate system involvement (CTU, RDS, NHS engagement, other sites)
- Support costing and advise on application admin

### **Aiming to:**

1. Keep a strategic overview of the LHP wide research portfolio
2. Develop research collaborations for new COVID grant applications and the formation of new research partnerships across the region
3. Continue facilitation of non COVID grants

### **\*New\***

- In order to ensure the feasibility of all COVID-19 related research, colleagues are required to complete the LHP Expression of Interest Form (existing form updated to include assessment of lab capacity and COVID questions)
- This form is used for grant review, facilitation and to support Silver assessment

STOP COVID is in place to

- keep an overview of the COVID research form across the system
- Reduce any duplication and promote collaboration
- Support planning for wave 2, recovery and systems research strategy

### LHP Programmes and Centres

- Strategic priorities
- Co-developing protocols & proposals
- Pathway for new researchers to engage

### Themes outside of LHP programmes (HEI level, LCTC, NIHR ARC etc)

- Strategic priorities
- Co-developing protocols & proposals

Support and review by **HEI & LHP & LHP SPARK** (grant facilitation, linking to LCTC/ RDS/ CRN, coordinating sites & costs, capacity and capability assessment).

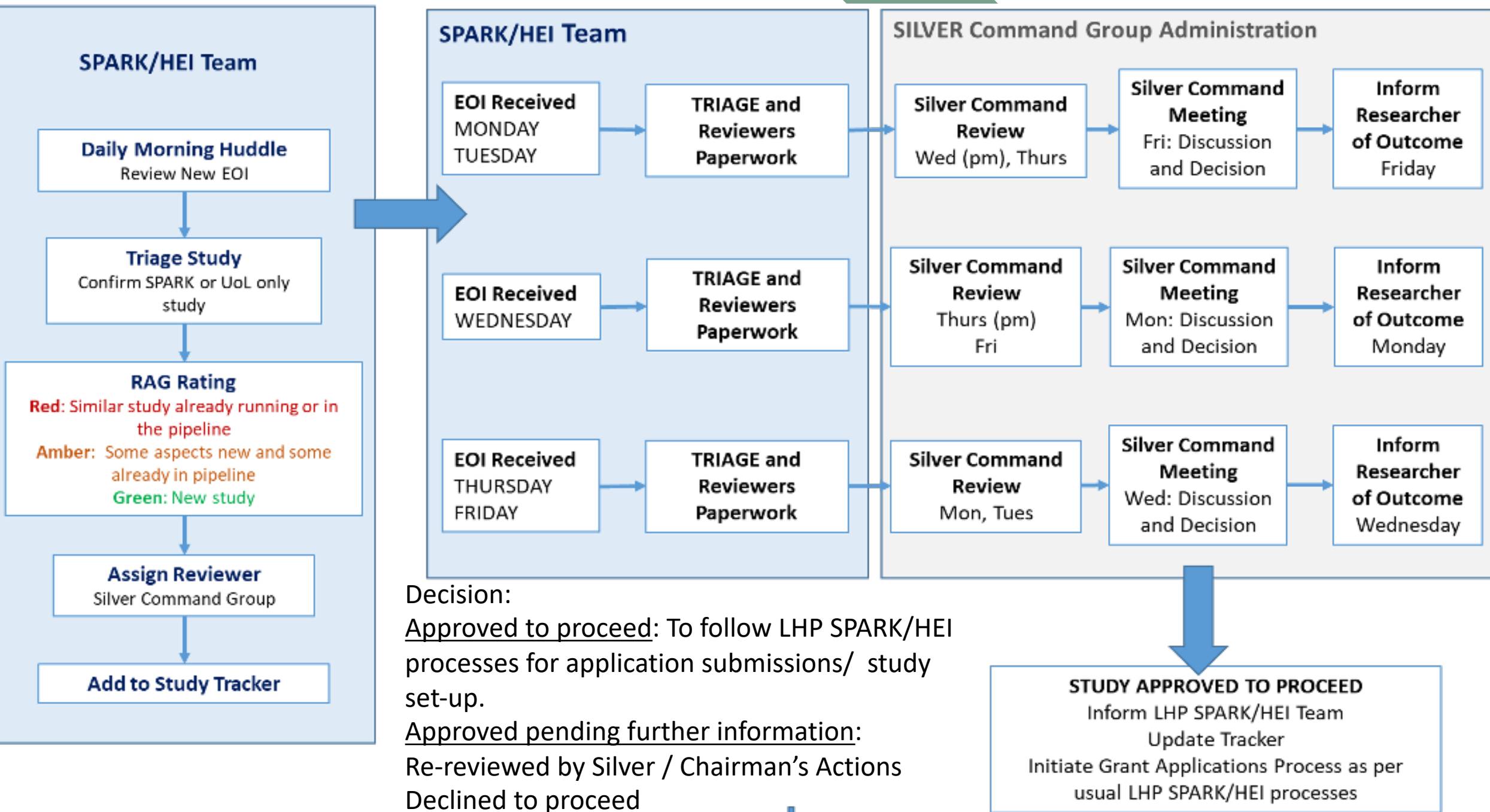
- EOI reviewed/ taken forward to Silver Group

### Silver Review group

- Review capacity reports (from SPARK & HEI capacity assessment e.g. lab space)
- Not intended to be scientific peer review
- Recommend submission

### Gold group

- Review national strategy
- Review and ratify approaches
- High level overview of portfolio



## Activity Overview- grants and research set up

[liverpoolhealthpartners.org.uk](https://liverpoolhealthpartners.org.uk)

- LHP SPARK pivot to COVID while moving to wfh
- Continuing set up to green light when restart
- Dealing with staff shortage
- Facilitating new structure

### Open and recruiting

- 14 UPH open (+3)
- 6 non UPH
- 5 national national evaluations

### COVID Study set

- average of 6 days
- median of 6.5 days

### Grant Applications

Number of Grants in Development

52

Number of Grants Submitted

31

Number of Grants Awarded

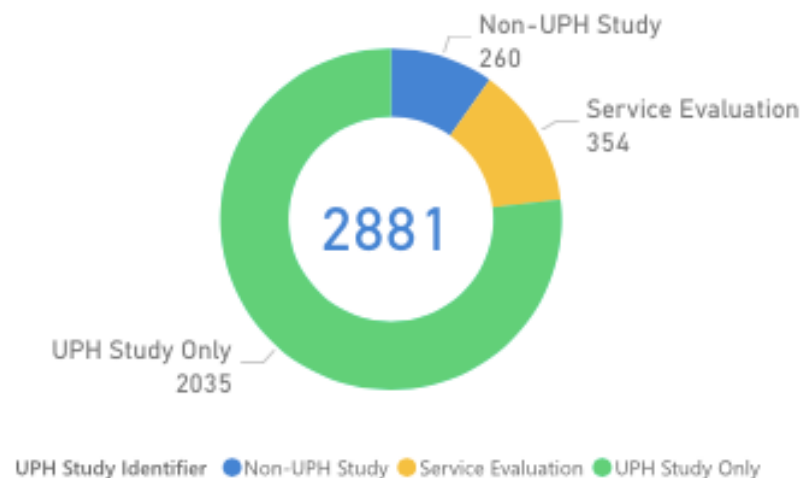
44

**Delivering national research**

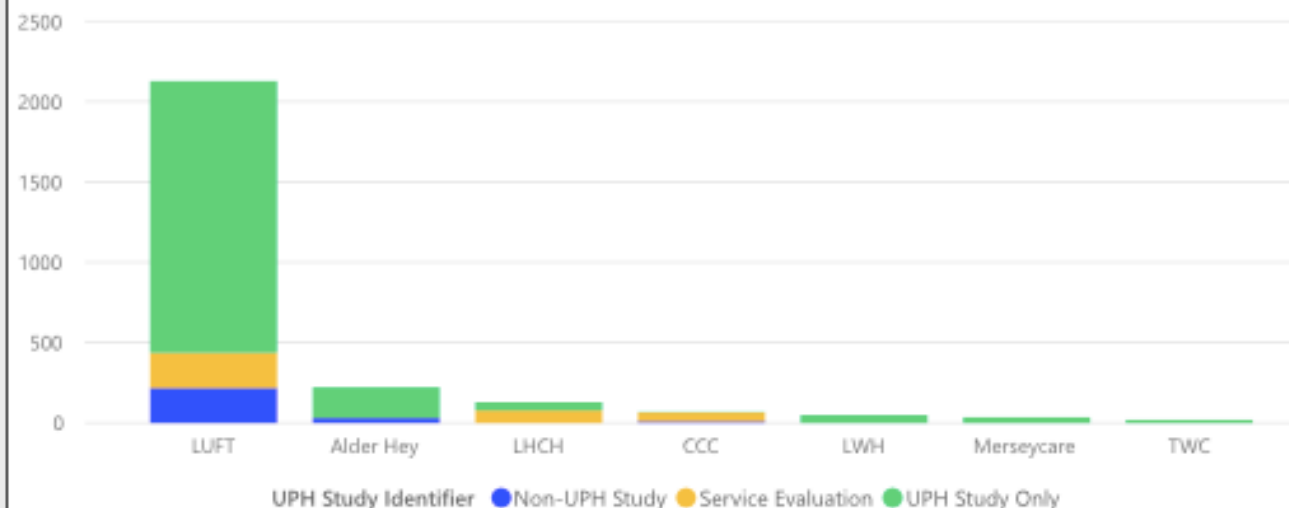
# Activity Overview

[liverpoolhealthpartners.org.uk](http://liverpoolhealthpartners.org.uk)

Recruitment Numbers



Recruitment to study types at Trust



UPH Badged Studies

Study Name	AH	CCC	LHCH	LUHFT	LWH	MC	TWC	Total
5773 Safety and Antiviral Activity of Remdesivir for severe COVID				2				2
5774 Safety & Antiviral Activity of Remdesivir for moderate COVID				1				1
CCP-Severe Emerging Infection / ISARIC/WHO Clinical Characterisation Protocol for Severe Emerging Infections	30	3	42	1310	13	35	18	1451
Coronavirus infection in immunosuppressed children	PIC 65							65
DIAMONDS	42			16				58
GenOMICC	1		8	65			0	74
RECOVERY - Respiratory Support				1				1
RECOVERY trial	0			57	0		1	58
REMAP-CAP			Open	5				5
PAN-COVID					21			21
The PRIEST Study	53			231				284
UKOSS: Pandemic Influenza in Pregnancy					15			15



## Spotlight Session

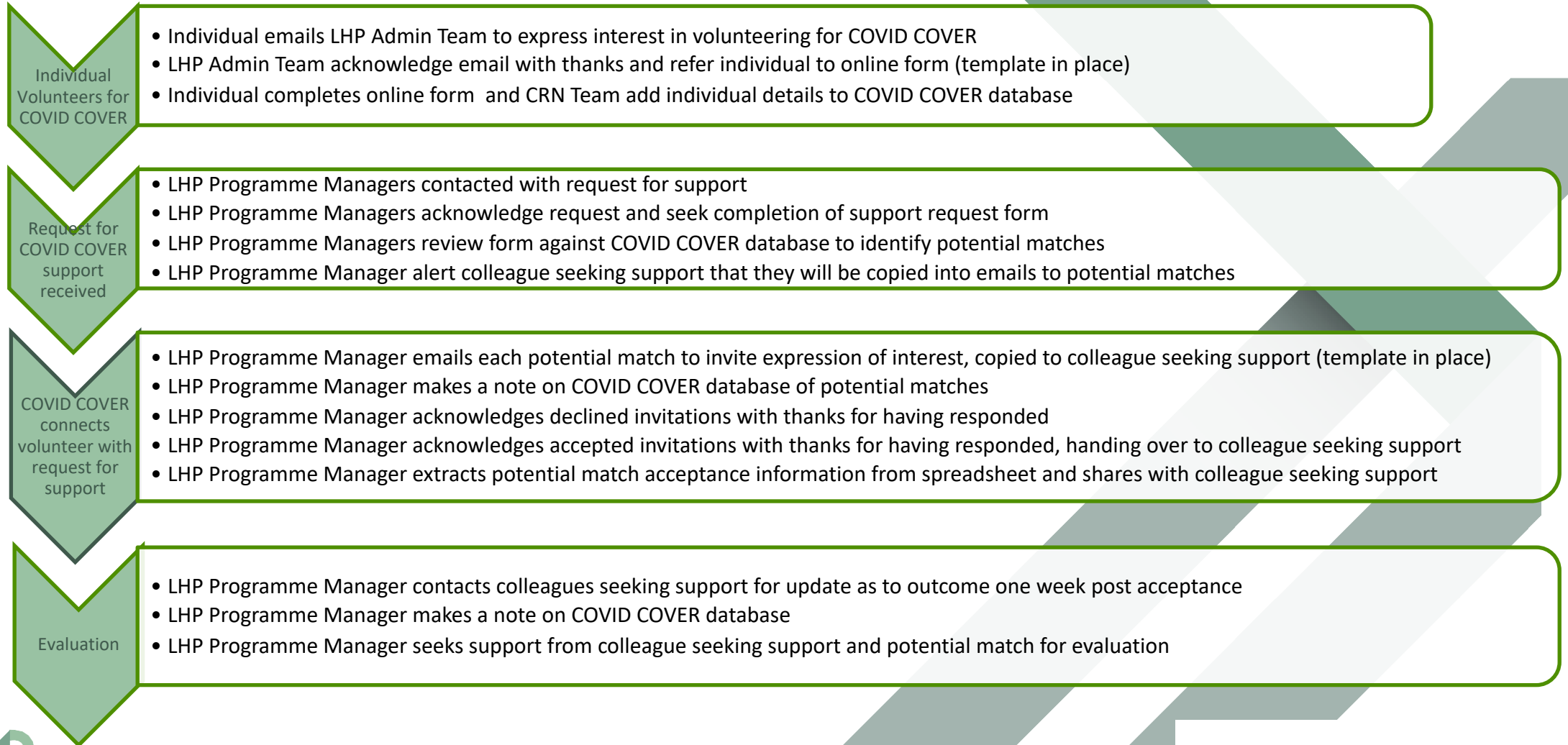
### **COVID Collaborative Volunteer Scheme (COVID-COVER)**

-Elizabeth Collins/ Carrie Hunt

### Example of Liverpool Led Studies

- Exploring the effects of COVID-19 on people with dementia, Clarissa Giebel
- COVID LIV, Dan Hungerford/Neil French

# COVID COVER Process



## Restarting research and next steps

- Research restart and wider recovery
  - working with R&D teams to define priorities for re-starting existing studies
  - Wider recovery strategic piece (working with LHP programmes, members and system)
- Continue development of strategic programmes
  - How to balance workforce requirements- including new healthcare worker research platform
  - Supporting and enabling new researchers (LHP- CRN collaboration)
  - Increase primary care integration and involvement
- Benchmarking against similar systems
- Keep communicating
- Review of STOP COVID group memberships and responsibilities (new disciplines and expertise)

Q&A and further info

See the LHP website for further details:

- STOP COVID: <https://liverpoolhealthpartners.org.uk/spark/coronavirus-covid-19-and-research-across-lhp/liverpool-stop-covid/>
- Support for developing research: <https://liverpoolhealthpartners.org.uk/spark/coronavirus-covid-19-and-research-across-lhp/liverpool-stop-covid/developing-covid-and-non-covid-research/>
- COVID COVER: <https://liverpoolhealthpartners.org.uk/covid-cover-volunteer/>
- Active clinical research studies: <https://liverpoolhealthpartners.org.uk/spark/coronavirus-covid-19-and-research-across-lhp/current-lhp-covid-19-research/>

Contact us

- General enquires: LHP Executive Office [lhpadmin@liverpool.ac.uk](mailto:lhpadmin@liverpool.ac.uk)
- Research support (via SPARK) [enquiries@lhpspark.nhs.uk](mailto:enquiries@lhpspark.nhs.uk)