



HALF YEAR REVIEW

2020



CONTENTS

HELLO FROM DAWN AND NEIL

03 WHAT'S COMING UP?

12

**LANDMARK MOMENTS FROM
OUR PROGRAMMES**

**04 OUR PARTNER
ORGANISATIONS**

13

CANCER	05
CARDIOVASCULAR	06
INFECTION	07
MENTAL HEALTH & NEUROSCIENCE	08
STARTING WELL	09
LHP SPARK	10
OUR MARKETING AND COMMS	11

HELLO FROM NEIL AND DAWN

We are proud to say over the last six months, our teams have responded to the changing guidance, mood and circumstances surrounding COVID-19 with professionalism and enthusiasm. In what has proved a difficult six month period we have still managed to have a hugely positive impact and keep on track with our strategic vision.

Thanks to our collaborative partners and expansive relationships across our network we're even closer to realising our vision of transforming the strategic landscape for research, education and service for Cheshire and Merseyside.

In this half-year review, we have pulled together some of our most impressive moments so we can pause and reflect on all of the hard work everyone has put in over the last six months.

READ ON TO FIND OUT ABOUT

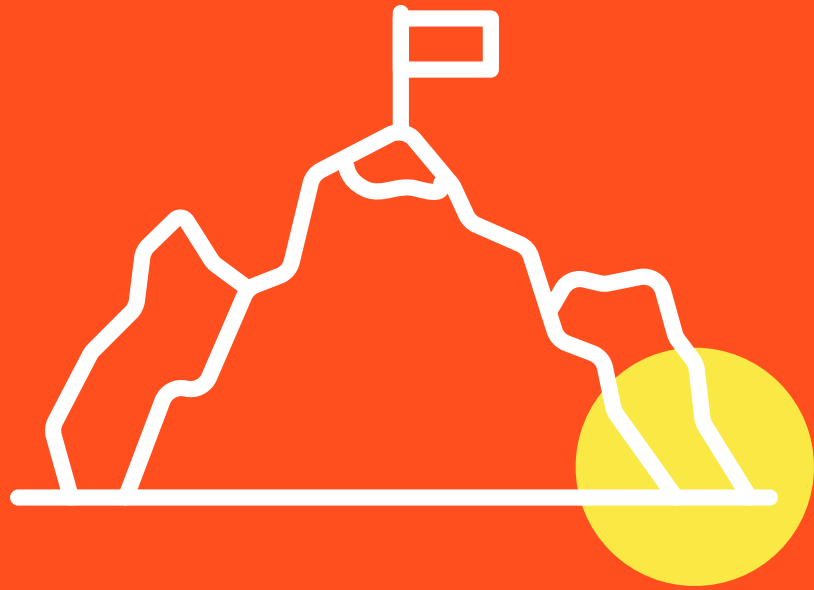
- ✗ New programme strategies that are set to have a positive impact on the city region
- ✗ Our STOP-COVID webinar series and working groups
- ✗ New collaborations across our network with our brilliant partners
- ✗ New appointments to bolster our offering
- ✗ The anticipated launch of our new brand and identity
- ✗ LHP SPARK's impressive reach during the pandemic and beyond



DAWN LAWSON
Chief Executive Officer
Liverpool Health Partners



NEIL GOODWIN CBE
Chair of the Board

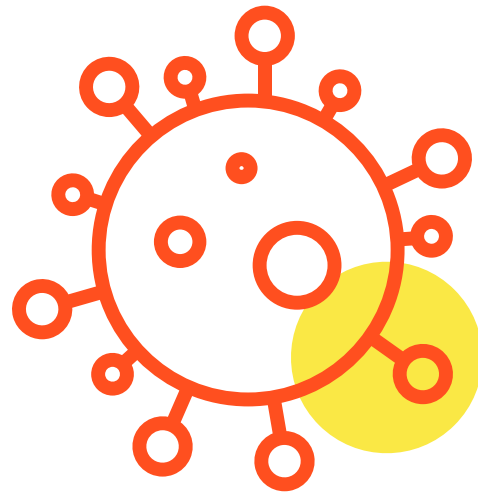


LANDMARK MOMENTS FROM OUR PROGRAMMES

We asked our colleagues what some of their most notable achievements were from the past six months, this is what they had to say.

LANDMARK MOMENTS FROM OUR PROGRAMMES

CANCER



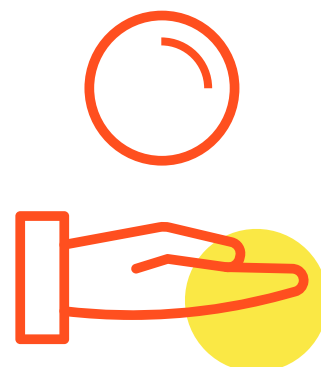
12 new collaborative projects were supported in their development over 6 months which leveraged >0.5 Million of national and regional funding for Cancer/ COVID-19 research and facilitated the establishment of novel collaborations in the region and nationally.

Download the Cancer Programme Strategy here:

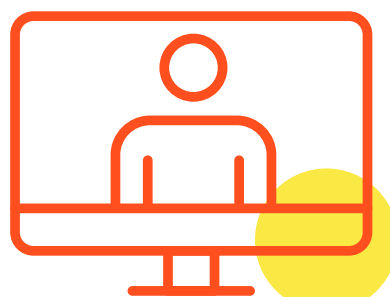
CARDIOVASCULAR



We took part in World Heart Day 2020 which saw a city-wide effort to raise awareness around Heart Disease and offer practical guidance on how best to look after your heart. The event culminated in several Liverpool landmarks being lit up as well as a diverse programme of virtual events to encourage people to 'listen to their heart'



Over £1m in funding successes in 2020/21 to date include awards for 'AFFIRMO' (AF integrated approach in frail, multi-morbid older people) an EU Horizon grant, and 'TAILOR' (Telehealth and Artificial Intelligence for Older People) from Liverpool CCG



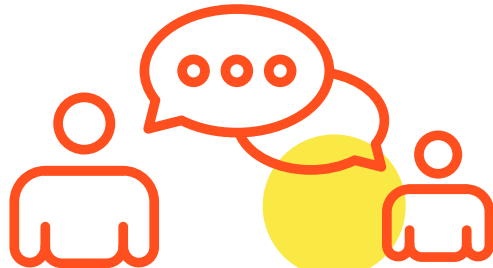
In excess of 100 research papers produced that are affiliated to LCCS

LANDMARK MOMENTS FROM OUR PROGRAMMES

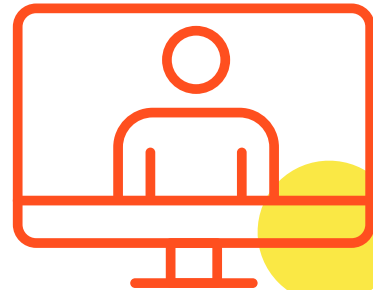
INFECTION



58 infection grant applications submitted



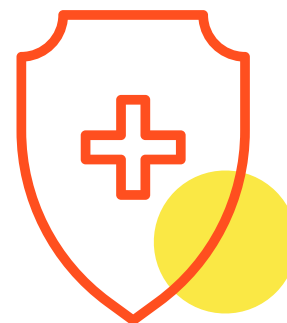
The STOP COVID city wide co-ordination of research response, supporting new collaborations



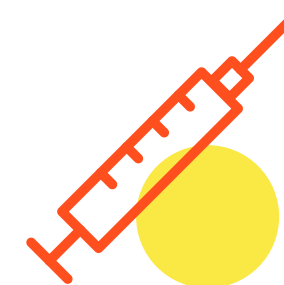
STOP COVID webinars, reaching more than 500 colleagues in clinical, academic and corporate roles across LHP's member organisations



We provided continued support for development of Liverpool's BRC application

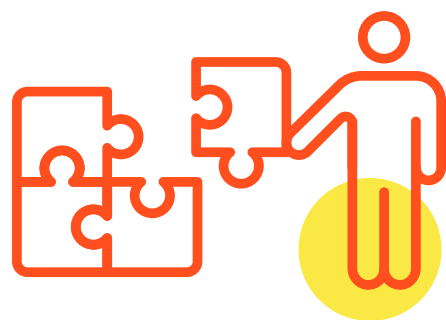


We will continue to use this experience to inform the definition of infection challenges in the Liverpool City Region, as it applies to our patients, population, health care workers and the healthcare system against the LHP Health Care Worker (HCW) Research Framework



We provided support for Liverpool led studies from first in human drug trials

NEUROSCIENCE & MENTAL HEALTH



A new Programme Manager for Neuroscience and Mental Health who will be starting in January 2021



We're also currently prioritising the development of a Neuroscience and Mental Health strategy which is set to launch in 2021

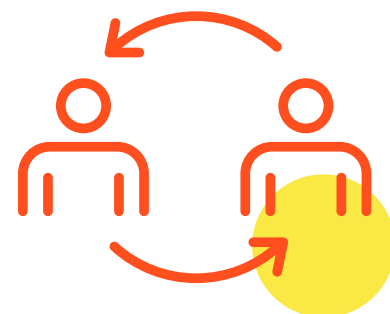


We've seen an impressive series of collaborations from the last six months including knowledge broker workshops with the North West Coast Mental Health Research Network, the establishment of **research groups including Neuroimaging, Neurovascular and Neuro-oncology** as well as notable collaborations with colleagues in the Cardiovascular stream on mental health.

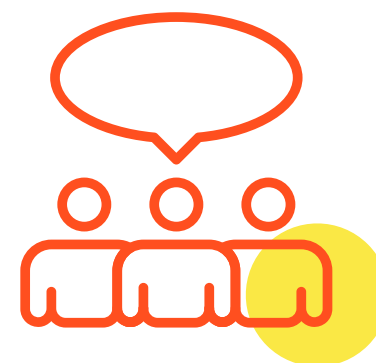
STARTING WELL



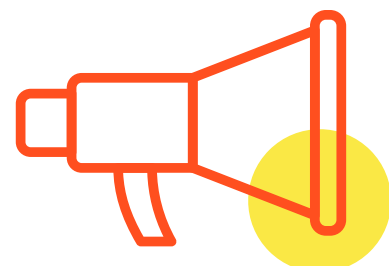
Ongoing support has been provided for the development and submission of research applications. Well over £3.5 million in grant submissions have been supported by Starting Well



Six knowledge broker workshops have been delivered to foster interdisciplinary working and support the development of research ideas and partnerships

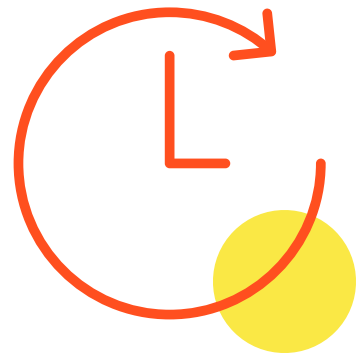


A Starting Well, Community Involvement and Engagement event has been held to bring together CIE best practice and expertise across the system.



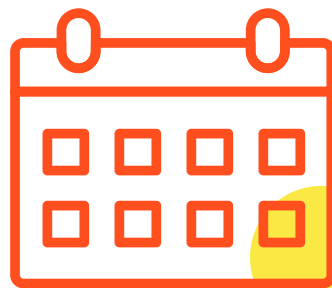
A new governance structure has been agreed and is being implemented involving all partners to support programme delivery to bring about transformational change

LHP SPARK



Median set up time was driven down to

15 DAYS

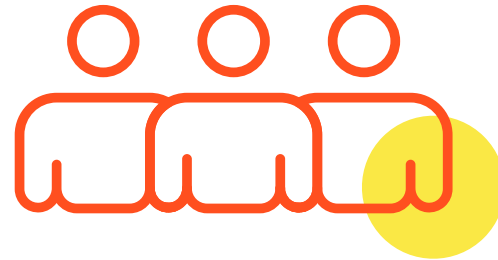


103

non-COVID applications have been made over the last 12 months as well as

61

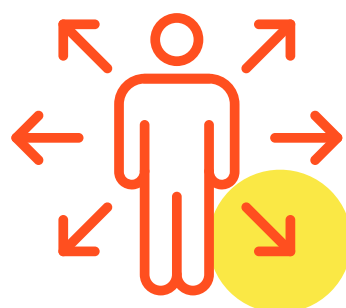
COVID applications



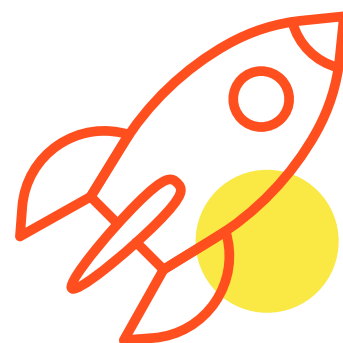
6,332

participants have been recruited into studies

OUR MARKETING AND COMMS



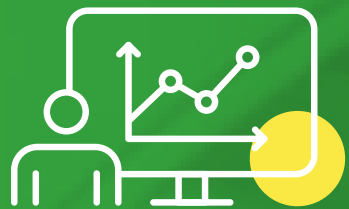
In a bid to bolster and improve LHP's communication and marketing efforts Melanie Harvey has been appointed as Communications Manager. With years of experience not only in journalism but partner health organisations, Melanie is a key appointment for our ongoing strategic vision.



Both our End of Year Review and Half Year Review have been teasers for our new brand identity which is set to launch in January 2021. The launch of the identity and a renewed focus on marketing and comms is supported by the appointment of our new communications agency Matchstick Creative.

WHAT'S COMING UP?

We also wanted to take this time to look forward and make you aware of some exciting moments coming soon.



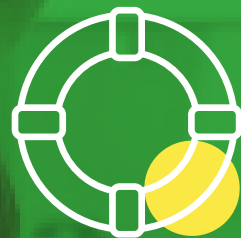
All programmes are excited to share their strategies with the wider Liverpool Health Partners network and how their bold visions for the future will address the health inequalities across Liverpool, Cheshire and Merseyside.



The Starting Well programme will appoint their Starting Well Strategic Leadership Group in early 2021.



The full launch of our rebrand.



All programmes will continue to support LHP's developing Community and Involvement Network via a programme of workshops across the life course.

LANDMARK MOMENTS FROM OUR PROGRAMMES

OUR PARTNER ORGANISATIONS

With thanks to all of the support shown by our partner organisations over the last six months. Our work wouldn't be possible without you.



Non voting board members





 [liverpool-health-partners](#)  [@LivHPartners](#)

0151 482 9386

LHPADMIN@LIVERPOOL.AC.UK

LIVERPOOL HEALTH PARTNERS | BRAND GUIDELINES

LIVERPOOLHEALTHPARTNERS.ORG.UK