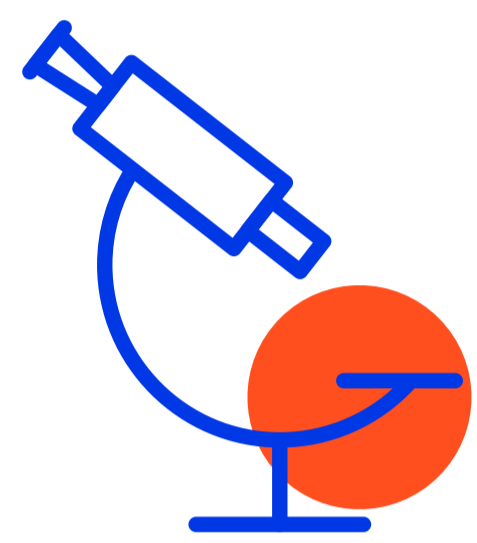




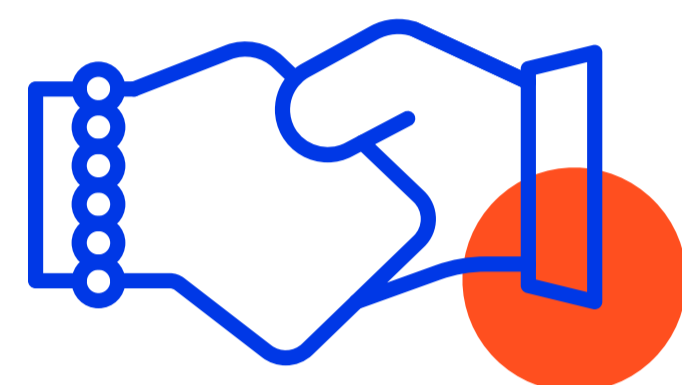
# CARDIOVASCULAR

The Cheshire & Merseyside region has some of the poorest heart health in the country, with the highest levels of cardiovascular disease (CVD) and stroke. To address the regional heart related health needs the Liverpool Centre for Cardiovascular Science (LCCS) has been formed, a strategic research collaboration between founding members - Liverpool Heart & Chest Hospital, Liverpool John Moores University, Liverpool Health Partners, and the University of Liverpool.

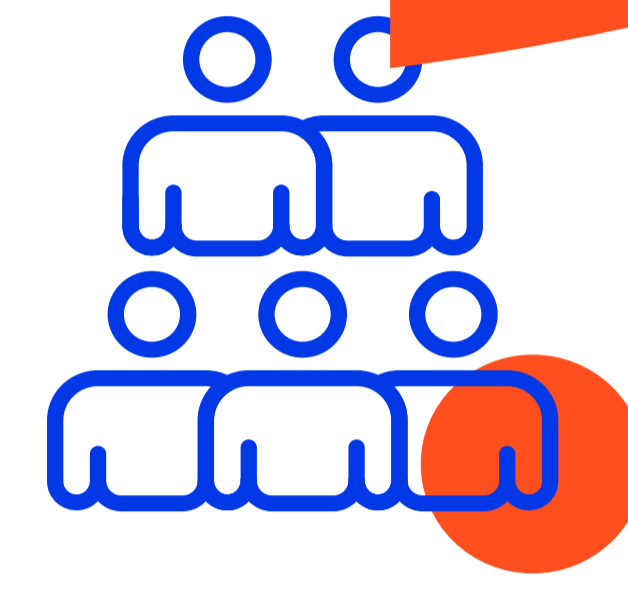
## OBJECTIVES



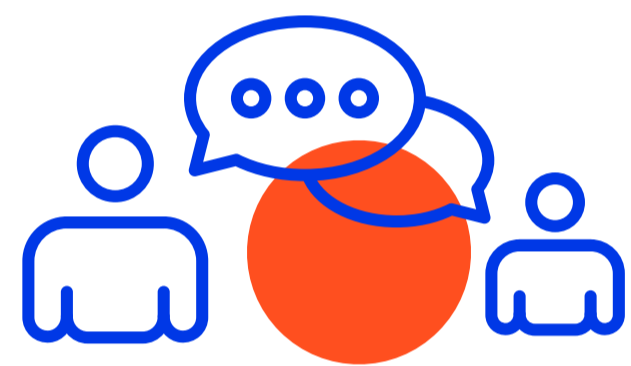
Create an integrated academic NHS centre for the advancement of cardiovascular and stroke research.



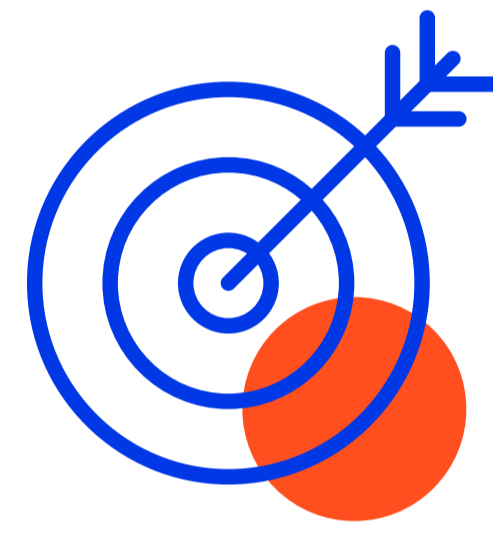
Build relationships with public and commercial stakeholders.



Develop a cadre of research leaders and teams from all relevant disciplines.



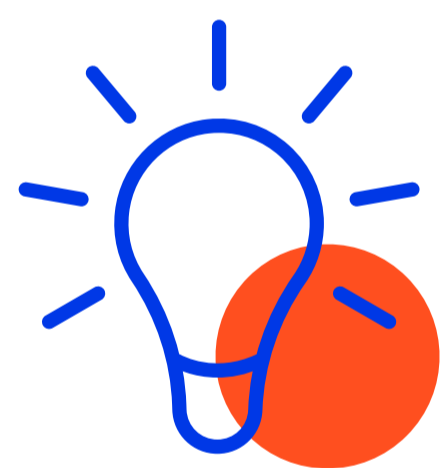
Collaborate across the full spectrum of cardiovascular health & disease (public health, prevention, treatment, rehabilitation) and associated disciplines with high co-dependency.



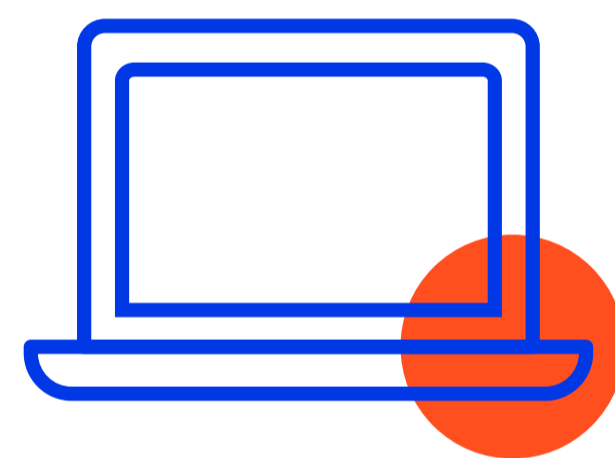
Prioritise the development of applied research and innovation, capable of rapid translation into clinical practice (bench to bedside).



Build programmes of education that ensure research innovation is applied in the clinical environment.



Ensure research and innovation programmes remain relevant.



Harness the power of digital technology to track our progress with achieving our objectives and identifying new research opportunities for the future.



The Liverpool Centre for Cardiovascular Science is committed to improving and saving lives through high-quality research in specific areas.

## RESEARCH PRIORITY AREAS – WITH LEADS

**1.** Epidemiology, machine learning and big data  
**STEPHANIE HARRISON**

**3.** Treatments, patient-centred approaches and cardiovascular nursing  
**IAN JONES, DEIRDRE LANE**

**2.** Basic science, translational, applied physiology and sports and exercise sciences  
**SUNIL LOGANTHA**

**4.** Applied health research – prevention, primary care, public health, health economics and global health  
**HELEN SHANTSILA, GREGORY LIP**

**IF YOU WOULD LIKE TO LEARN MORE, PLEASE EMAIL:**

**PAUL.BURDETT@LHCH.NHS.UK** or visit our [website](#)

