

LIVERPOOL HEALTH PARTNERS

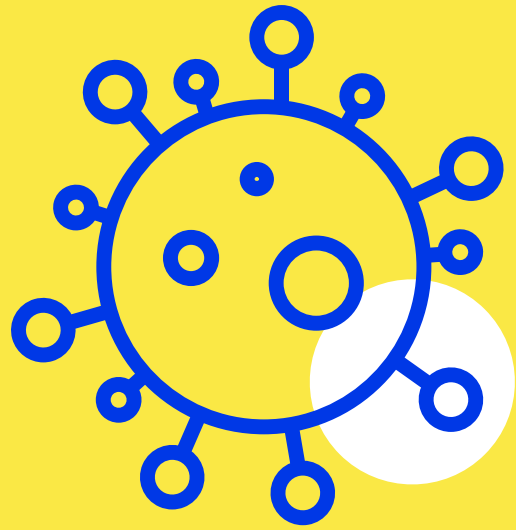
COVID-19 REPORT 2020/21

CONTENTS

COVID-19 RESPONSE & RECOVERY	03
STOP COVID	04
Oxford AstraZeneca and national vaccine trials	05
How SPARK responded to COVID-19	06
How our programmes responded to COVID-19	12
Infection	12
Starting Well	12
Cardiovascular	13
Cancer	13

OUR PARTNER ORGANISATIONS





COVID-19 RESPONSE & RECOVERY

The effects of the COVID-19 pandemic were catastrophic on the health of the people of Cheshire and Merseyside. This impact was not only due to the direct effects of the virus, but also the stress and disruption caused to the lives of our local population, the disruption to education, the toll on people's mental health and the devastating effect on sectors of the economy. Of most concern is that these impacts were disproportionately experienced by our most disadvantaged communities. This also hindered health services delivering treatments and continuing with vital research.



COVID-19 RESPONSE AND RECOVERY

STOP COVID

It became clear in the early days of the pandemic that we had to act quickly to coordinate and streamline the local research response. This rapid response was enabled by establishing the Strategic One Liverpool Partnership for COVID (Liverpool STOP COVID). Building on the existing LHP SPARK infrastructure, this response structure was aligned with and augmented existing national and regional COVID command structures and Trust level controls.

As a result of the significant collaboration of our NHS chief executives and Higher Education Institute Pro Vice Chancellors we were able to develop a city-wide approach to assess, approve and direct COVID-19 research. STOP COVID had delegated authority from our member organisations to enable us to work as a system to manage our collective resources and deliver our collective ambition.

We deliver high quality research to most benefit the needs of our local people and healthcare system, enabling all Partners to excel in nationally and locally led COVID-19 research. Working collaboratively meant that the city was able to recruit more than 12,000 patients into COVID treatment and vaccine studies.

“Working collaboratively meant that the City was able to recruit more than 12,000 patients into COVID treatment and vaccine studies.”



COVID-19 RESPONSE AND RECOVERY

OXFORD ASTRAZENECA AND

NATIONAL VACCINE TRIALS

Hundreds took part in research trials for the Oxford AstraZeneca Vaccine, organised by our partners at The Liverpool School of Tropical Medicine and Liverpool University Hospitals NHS Foundation Trust.

Meanwhile, Liverpool worked with the Government to set up the mass asymptomatic testing, which took place in the Liverpool city region from November when assisted by the Army a quarter of the local population responded by getting tested.

Partnership working was crucial to the success of the local response to COVID-19 and LHP played a crucial role in bringing people and organisations together. As we emerge from the pandemic we now look to the 'reset' and LHP will double down our efforts to use the learning of the last year to inform the future working of our system.



COVID-19 RESPONSE AND RECOVERY

HOW LHP SPARK RESPONDED TO COVID-19

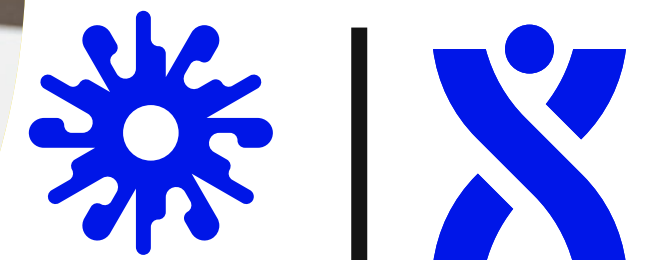
SPARK's ongoing aims are to provide efficient, streamlined research services for NHS and HEI colleagues, to reduce duplication in processes and enhance the support provided across C&M to researchers. We do this in collaboration with LHP members and partners, such as the NIHR CRN, to attract and deliver more commercial research and to enhance our digital-first approach to research management. COVID has allowed SPARK to consolidate relationships and to support the delivery of excellent research, at speed across our members.

LHP SPARK had to rapidly adapt processes and systems to respond to the COVID pandemic.

LHP SPARK led the Liverpool STOP-COVID Command Structure which allowed for:

- Rapid set up and delivery of national Urgent Public Health (UPH) studies and local strategic research
- Developing research collaborations around new COVID grant applications and the formation of new research partnerships across the region
- Work as a system to tackle the challenges of the COVID pandemic

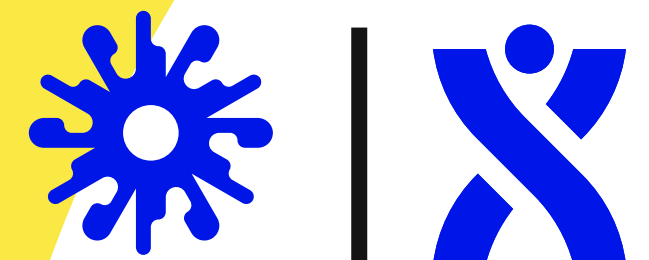
LHP SPARK had to develop new processes for intake and review of COVID related EOI and grant applications, support grant development for rapid COVID calls as well as continuing to support non-COVID grant applications. LHP SPARK led on study costing and feasibility and worked in close collaboration with the LHP Programmes to enhance information sharing.



COVID-19 RESPONSE AND RECOVERY

COVID PANDEMIC ACCELERATED COLLABORATION ON A NUMBER OF FRONTS:

- 1.** System Wide Working through the LHP SPARK Operational Leadership Group (Bronze command). Members included LHP R&D Directors and LHP R&D Operational Leads from our LHP partners NHS Trusts and HEI's, LHP SPARK Team, Liverpool Clinical Laboratories, LCTC and NIHR CRN NWC. The group was responsible for prioritising areas of research focus, overseeing workforce allocation and monitoring study set-up and recruitment to COVID studies.
- 2.** Co-development of the LHP SPARK COVID Power BI Performance Dashboard, a digital first to allow for daily monitoring of COVID related research activity and help coordinate activities and manage COVID workforce allocation.
- 3.** Developing alignment and integration of LHP SPARK with LHP member organisations to support the full pipeline of research development, set-up and delivery.
- 4.** Engaging and working collaboratively with primary and community care, volunteer sector and civic organisations.



COVID-19 RESPONSE AND RECOVERY

LHP SPARK LED ON A NUMBER OF STRATEGIC INITIATIVES DURING THE PANDEMIC, WHICH INCLUDED:

- 1.** Support and the development of the LHP Vaccine Research Strategy. LHP SPARK worked in close collaboration with LSTM and the Central Vaccine Alliance to support recruitment and delivery of the Oxford Vaccine Study and follow-up of participants.
- 2.** Development of the LHP Health Care Worker Research Framework (HCWRF) which allowed for the efficient set-up of multiple recruitment sites for HCW related studies. HCWRF supported the set-up and recruitment of SIREN (Sarscov2 Immunity & REinfection EvaluationN) an NIHR urgent public health priority study which aims to determine if prior SARS-CoV-2 infection in health care workers confers future immunity to re-infection. LHP NHS Trusts recruited over 800 health care workers onto the study.
- 3.** Established an agile and deployable LHP SPARK COVID task force alongside NIHR CRN NWC Taskforce to support LHP NHS Trust Research Delivery Teams deliver COVID research, in particular NIHR UPH COVID studies.

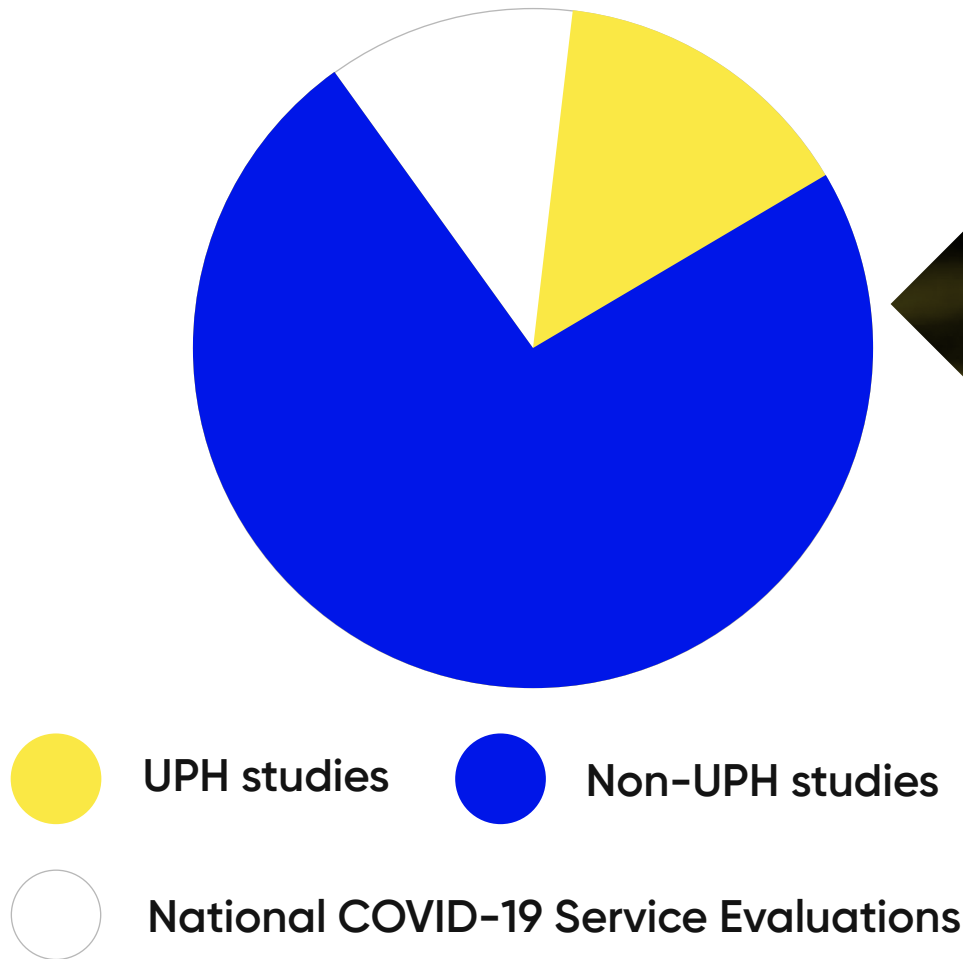
LHP SPARK are continuing to support COVID related research and going forward, want to ensure successful collaborative and system wide working remains post COVID.



COVID-19 RESPONSE AND RECOVERY

NUMBER OF COVID-19 STUDIES IN SET-UP

Type of Study	Number of COVID studies in set-up as of 31 March 2021
UPH Studies	3
Non-UPH Studies	16
National COVID-19 Service Evaluations	2
Total	21

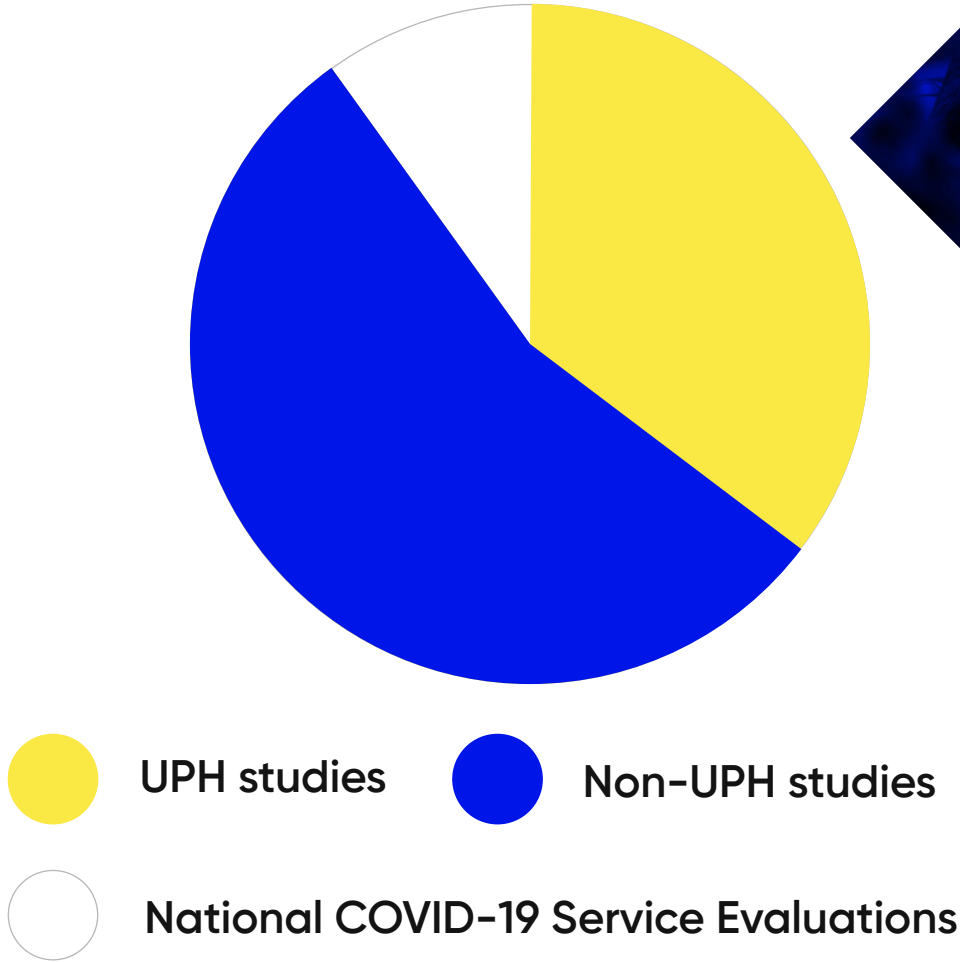


COVID-19 RESPONSE AND RECOVERY

NUMBER OF COVID-19 STUDIES OPEN AND RECRUITING

A totally of 12,483 participants have been recruited into COVID-19 studies.

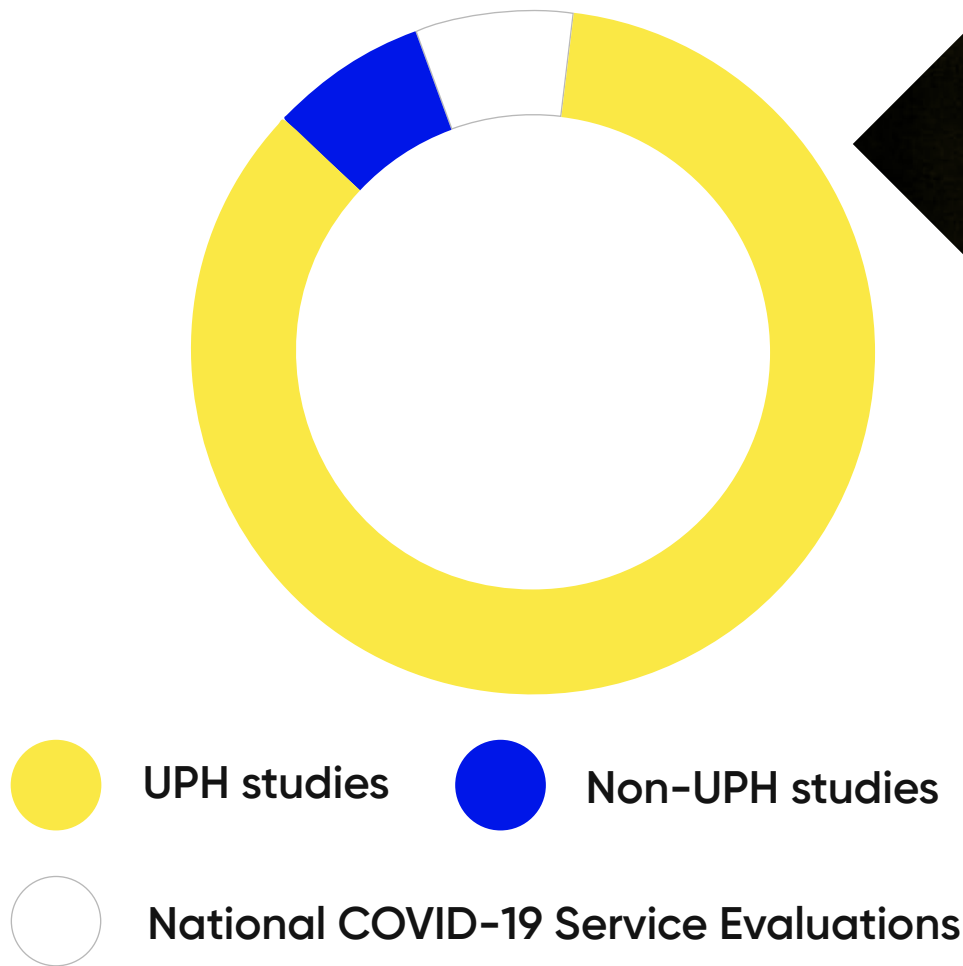
Type of Study	Number of COVID studies open as of 31 March 2021
UPH Studies	20
Non-UPH Studies	33
National COVID-19 Service Evaluations	6
Total	59



COVID-19 RESPONSE AND RECOVERY

NUMBER OF PARTICIPANTS RECRUITED TO COVID-19 STUDIES

Type of Study	Recruitment Numbers 31 March 2021
UPH Studies	10,006
Non-UPH Studies	1,115
National COVID-19 Service Evaluations	943
Total	12,483



COVID-19 RESPONSE AND RECOVERY

HOW OUR PROGRAMMES RESPONDED TO COVID-19

As the pandemic progressed our programmes pivoted from their usual streams of work to help respond to the crisis. It was truly inspiring to see colleagues from different programmes and organisations working collaboratively across the system.

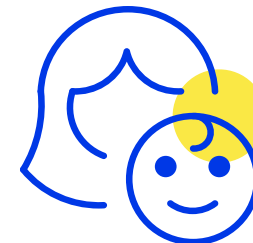


INFECTION

We worked with colleagues from 12 partner organisations and the Centre of Excellence in Infectious Diseases Research (CEIDR) to support Liverpool's STOP COVID response to the pandemic, with 58 infection grant applications submitted, which included new collaborations across the system.

Organised additional capacity across the system to support the STOP COVID response, by building a framework for the COVID COVER initiative, which managed over 100 volunteers with a range of skills, matching their knowledge and experience to staffing requirements to support the city's research effort.

Established new communications mechanisms across the system, including monthly STOP COVID webinars, which reflected the breadth and depth of activity across the system at pace. This resulted in the presentation of over 20 research projects to keep more than 500 participants informed of progress in real time.

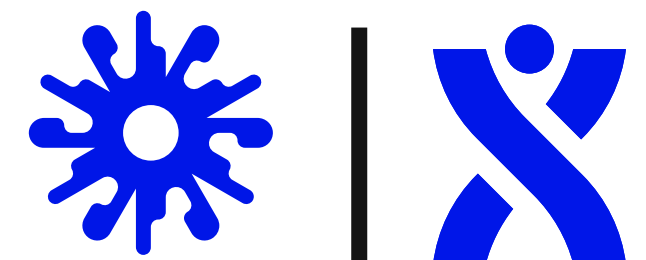


STARTING WELL

Our Starting Well Programme Manager helped coordinate researchers in Cheshire and Merseyside to come together and share their knowledge and learnings of the effect of COVID-19 on local people. A series of studies are taking place across our HEIs to understand how the pandemic and lockdown has affected the region's population.

Some of the themes they are exploring include:

- The psychological and social impact of COVID-19
- The impact on disadvantaged neighbourhoods
- The emotional response of the local population
- The effect of 'fake news in social media'
- The impact on arts and culture
- The effect on mental health
- The impact on asylum seekers
- The impact on violence against women



COVID-19 RESPONSE AND RECOVERY

HOW OUR PROGRAMMES RESPONDED TO COVID-19



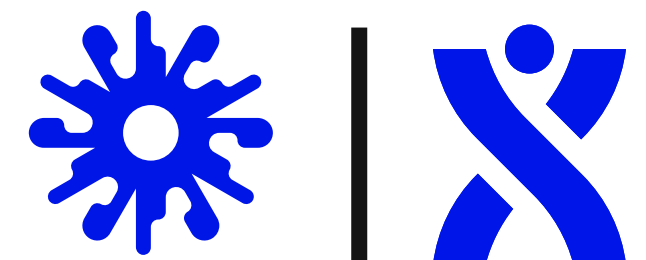
CARDIOVASCULAR

The LCCS published a number of papers in the last year exploring the links between cardiovascular disease and COVID-19. They included a Public Health England commissioned umbrella review to systematically examine the associations between cardiovascular risk factors, cardiovascular disease (CVD) and COVID-19. The evidence showed that people with CVD have 3.9 times higher odds of severe COVID-19 and 2.7 times higher odds of mortality. High blood pressure, obesity, diabetes and current and former smoking were also associated with more severe outcomes from COVID-19.



CANCER

Early on in the pandemic we established the Cancer/COVID workstream established to provide strategic oversight of Liverpool's Cancer/COVID research portfolio and optimise project development, communications and alignment with the LHP STOP COVID framework. The Cancer/COVID leadership group brought together researchers from the fields of medical, clinical and surgical oncology, haemato-oncology, infectious diseases, psychology, bioinformatics and data science. The researchers, with the support of the group and its management team, were able to take project ideas and develop them to collaborative project proposals by building cross-disciplinary teams and leveraging more than £500,000 of funding for Cancer/COVID related research.



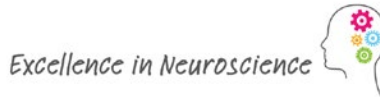


OUR PARTNER ORGANISATIONS



OUR PARTNER ORGANISATIONS

With thanks to all of the support shown from our partner organisations this year. Our work wouldn't be possible without you.



NON-VOTING MEMBERS OF THE BOARD.





[liverpool-health-partners](#)



[@LivHPartners](#)

0151 482 9386

LHPADMIN@LIVERPOOL.AC.UK